

London Grove Township Gazette

Winter 2025-2026

By: Jordon Hoopes

As we are all in the midst of getting gifts ready, putting up the decorations, & managing the busy holiday schedules, it is important to remember to take some time and ensure we have a fun and safe season! Below are some ways to make sure you don't have any issues while you are trying to enjoy your time with family and friends:

- 1) Check decoration & light cords to make sure they are intact. Damaged wires can cause a fire.
- 2) Weatherproofing now can save a headache later. Insulating water lines & opening cabinet doors to allow heat in can prevent pipes freezing in low temperatures. Know where your water shut off valve is inside the house so you don't have to find it during an emergency.
- 3) Making sure all windows and doors have a tight seal can save on an expensive heating bill.
- 4) Layering clothing is important and often overlooked. If you are going to be spending prolonged periods of time outside, your usual jacket may not be enough. Extremities like your nose, fingers, and toes are the first to be hit with frostbite, make sure to cover exposed skin especially on windy winter days.



Inniscrone Golf Course News!

As we approach the end of another season, we look back on a successful year for Inniscrone Golf Club. This year we will come very close to 30,000 rounds which will be the highest total the golf course has seen for one year! A big factor in achieving that number is the new cart fleet. The new carts were a big upgrade for our customers and by increasing the number of carts available we were able to support more rounds each day. Along with the new carts, the long-range plan to replace the existing cart paths continued. This year hole #4 was finished and we thank Shane Kinsey and the public works crew for performing that work.



In 2025 we started hosting competitive events at Inniscrone. We had a Hurricane Junior Tour which was a three-day event over Memorial Day weekend, as well as hosting the Philadelphia PGA junior tour. With this increase in play comes more wear on the golf course, but Chris Newdeck and his crew did an amazing job keeping the course in great shape all year round. The relationship between Mother Nature's Sun catering, which leases the upstairs kitchen, and the golf course has become a very strong business relationship for both parties as well!

In 2026 we look forward to continuing to improve the golfing experience at Inniscrone, including plans to upgrade the pro shop, bunker renovation, more cart path replacement, and the purchasing of maintenance equipment which is essential in keeping the golf course in top notch shape. In the past three years the maintenance department has added a number of pieces of equipment including aerators, utility carts, and mowers. All of these upgrades lead to a great experience for members, daily play, and events that we have at here at Inniscrone!



Even though we are going into the off season, it is never too late to plan for the 2026 season. If you ever thought about becoming a member of a golf course, Inniscrone would be a great place to join. We have many different packages, with one of them sure to fit into your schedule. Don't forget, London Grove residents get a discount on memberships and daily golf

also! The off season is also a good time to plan an outing if you are looking for a fund raiser for your organization. To inquire about memberships, events, or to just make a tee time please call the pro shop at (484) 720-8442.



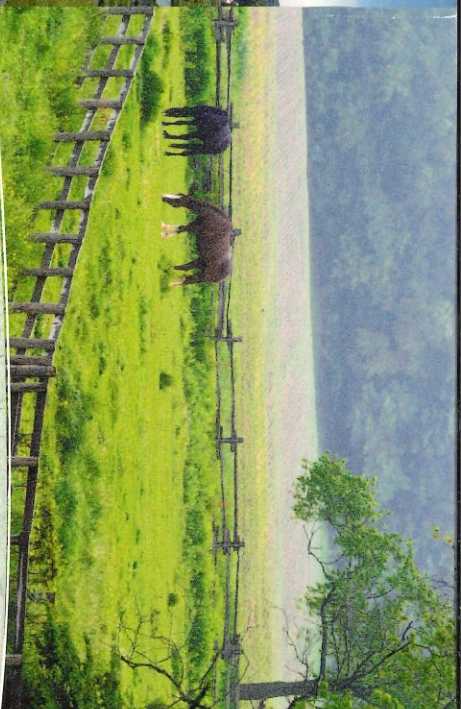
London Grove Township Open Space

A Community Commitment Since 2005
The London Grove Township Open Space Committee was formed to support the preservation of open space throughout our community.

We believe open space is more than just scenery - it is essential to our community's health, identity, and long-term sustainability.

Why Open Space Matters

- Preserves the rural character and beauty of London Grove Township.
- Supports local agriculture and protects valuable farmland.
- Enhances property values and quality of life.
- Protects natural resources and ecosystems.
- Promotes outdoor recreation and community wellness.



Let's Start the Conversation

Whether you're ready to act or simply exploring possibilities, we invite you to learn more.

Hours of Operation
Monday - Friday 8:00 a.m. - 4:30 p.m.
610-345-0100



Together, we can protect
the land that defines us.

Preserve What Matters Most

Open Space



A legacy of
land, protected
for generations
to come!



Open Space Objectives

1. Identify & Protect Priority Lands
 - Target areas with significant environmental, natural, and agricultural value.
 - Use Township mapping to guide decisions and track preserved parcels.
2. Educate & Engage the Community
 - Provide information through newsletters, the Township website, and public meetings.
 - Encourage community involvement in open space initiatives.
3. Implement Township Plans
 - Carry out open space and greenway recommendations from the 2002 & 2005 Comprehensive Plan updates.
 - Coordinate closely with the Parks & Recreation Board on trails, recreation & greenway protection.
4. Partner with Landowners
 - Work directly with property owners to explore acquisitions, easements, & stewardship agreements.
 - Support long-term land management techniques that sustain open space.
5. Plan for Future Preservation
 - Develop a 10-year strategy for open space acquisitions and easements.
 - Identify funding sources to ensure sustainable preservation efforts.
6. Collaborate with Partners
 - Participate in Chester County's Agricultural Lands Preservation Board programs.
 - Work with conservation groups such as the Brandywine Conservancy, Natural Lands Trust and many more.

Your Land, Your Legacy

If you own a 10 acre parcel or larger in London Grove Township, you may be eligible for one or more preservation options.

Our Committee is here to:

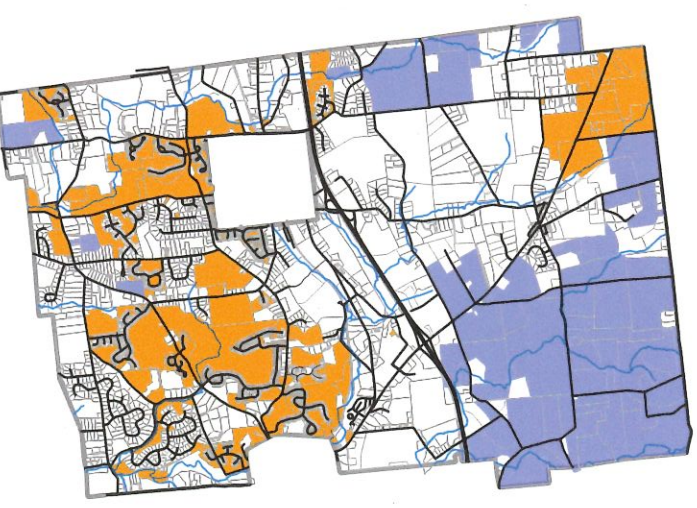
- Provide guidance tailored to your property.
- Connect you with local, county, and nonprofit resources.
- Help you preserve your lands agricultural, scenic, or ecological value.

Preservation is always voluntary. We're here to help you explore your options and protect what matters most.

How Land is Protected

The Township's Open Space Committee works in collaboration with landowners and conservation partners. Parcels under permanent protection may fall into several key categories:

- **Agricultural/Conservation Easements (Blue)**
Landowners sell their development rights to ensure farmland remains in production forever. Additionally, Private Conservation Easements established to preserve land in its natural state while retaining private ownership.
- **Public Ownership/HOA Land (Orange)**
Includes properties such as Goddard park and Avon Grove School District lands, providing recreational and educational value to the community.



LONDON GROVE TOWNSHIP



PARKS AND REC MEETING
372 ROSE HILL RD • DEC 17 6PM

Attention all London Grove Township Water Customers!



In recent months we have been having a multitude of issues with sending and receiving bills and bill payments through USPS. Many customers have called in about not receiving their mailed bills in a timely manner. Unfortunately there is very little we can do as once the bills are put in our mailbox, it is in the hands of the postal service.

If you have not been receiving water bills by email already, please email jhoopes@londongrove.org or call the office at 610-345-0100 so that we can add an email to your account. By adding an email to your water account with us, a PDF copy of your bill will be emailed out to you as soon as the physical copy is printed. This way you will receive both the physical copy, as well as an emailed PDF as a backup in the event the mail does not deliver the physical bill.

We appreciate your understanding, as we have all been affected by these mailing delays!



Avon Grove Library News

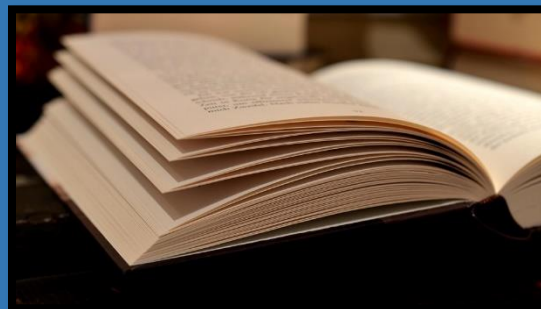
As we move into the winter months of December, January, and February, the Avon Grove Library invites the community to come out of the cold and enjoy the warmth, connection, and creativity the library offers all season long. December brings a full slate of holiday programs, giving families a chance to celebrate together with festive stories, crafts, and special activities that make this time of year feel magical.

Whether you're stopping by for a seasonal event or just seeking a cozy corner to read, the library is a joyful place to gather during the holidays.



Looking ahead to the New Year, we're excited to launch Baby Storytime beginning in January. This gentle, early-literacy program is designed especially for infants, toddlers, and their caregivers, introducing little ones to rhythm, language, and stories in a supportive and playful environment. It's a wonderful way for families to connect during the winter months and begin building a love of books from the very start.

Later in the winter, we will also be introducing our 1,000 Books Before Kindergarten initiative. This program encourages families to read together and celebrate early literacy milestones, one book at a time. Registration and tracking materials will be available at the library in the New Year, and we look forward to supporting families as they begin this exciting reading journey.



No matter the weather outside, the library remains a warm and welcoming place for all. We hope you'll make us part of your winter routine. Whether you're here for a program, to browse books, to enjoy a quiet moment, or simply to reconnect with community there's always something happening at the Avon Grove Library, and we can't wait to welcome you this season. Make sure you follow us on social media @avongrovelibrary ; and check out our website at avongrovelibrary.org to stay in the know.

Department of Public Works Winter Operations

The Department of Public Works currently maintains approximately 140 lane miles of roads, 180 intersections, and 68 cul-de-sacs within London Grove Township.

Starting in 2012 the township began pre-treating all roadways with a 23.3 % solution of Liquid Sodium Chloride (NaCl) blended with a protein (beet juice) prior to forecasted winter storms when applicable. This “brine” application reduces the costs associated with winter maintenance of the roads and make the roads safer by limiting the bond of snow to the road surface. Utilizing beet juice allows the township to blend for each storm to reduce costs and the corrosive nature of the brine. Storms of 1” or less of snow, along with ice storms are typically maintained by applications of de-icing materials during the storm. Storms producing greater than 1” of snow typically require the use of plows.



ROUTES – For the winter 2025/2026 Season, London Grove Township will be divided into 10 routes, with a truck equipped with a plow and material spreader assigned to each of the routes. During periods of moderate to heavy snow additional equipment with snowplows are assigned to supplement the trucks.

Roads are plowed and deiced in order of priority. Main roads are addressed first with special attention to steep hills, bridges, curves and intersections. Side streets are done next, then dead-end streets. A single pass will be made on side streets to keep them open, but primary emphasis will be placed on main roads until the storm has stopped.

BLOCKED DRIVEWAYS – In performing plowing operations, in almost all cases the plow operator must push snow to the operator’s right, this is especially true when plowing turn a round’s and cul-de-sacs. When going by they cannot avoid pushing the snow in front of a driveway. The best way to avoid having your driveway “plowed-in” is to wait until crews have completed their final clean up on the street, typically this is when the street is only wet or bare, to clear your driveway. Another way to reduce the amount of snow which ends up in your driveway is to clear an area to the right of your driveway, when looking at your driveway from the street, to give the snow on the blade of the plow a place to empty before it gets to you driveway.



PRIVATE PLOWING AND SHOVELING – London Grove Township Regulations and Pennsylvania Law make it illegal to push or blow snow from sidewalks, driveways or parking lots onto public roads. This practice is dangerous and impedes the townships snow removal efforts. If there is no other alternative to pushing snow into the street, the plow driver must plow off the windrow left across the street by re-plowing until the road is safe. This may not necessarily mean bare pavement, but certainly, it should be no worse than when the driver began work.

HOW CAN YOU HELP – winter operations are very expensive to the Township and the assistance of the township residents is an integral part of this operation.

- Placing markers along the roadway in the front of your property can help the operator locate the road. This also reduces the chances for the Right-of-Way to be damaged by the plow leaving the road surface. This is especially important in area where the roadway curves. Additionally, marking the edges of driveways in cul-de-sac's can help the operator locate your driveway so that a large pile of snow is not plowed into it. Reflective markers are available at low cost from most home improvement stores, and on-line.
- Stay off the roads during storms when possible. The more vehicles on the road during a storm, the slower and more expensive a winter operation becomes. It is best only to travel during a storm when absolutely necessary.
- Do not block maintenance vehicles. Attempting to block a township plow, to avoid having your driveway plowed in is illegal in Pennsylvania; additionally, this practice slows down the operations resulting in an increased expense to the Township and the residents. The Township is required by law to maintain the road surface, and this almost always means plowing the snow to the operator's right.
- Do not place snow on the roadway. This practice decreases the effectiveness of de-icing materials and slows the plowing operation. Additionally, it is illegal to place snow on the roadway in Pennsylvania.
- Avoid parking on the roadway when possible. This is especially true in cul-de-sacs. Vehicles parked in the roadway slow the winter operations, and in many cases make it difficult for the operator to remove snow from the area. Parking off the roadway also decreases the chances of your vehicle being damaged during a storm.
- Trim trees and growth and relocate items such as basketball nets so that there is a minimum of 14 feet clearance above the road surface. Most of the Townships winter equipment is in excess of 12 feet in height and must get close to the edge of the roadway to properly clear the road.
- Be sure your mailbox has a strong support. You also may wish to use reflective tape or other material to make the mailbox easier to see during storms or during dark hours.
- Stay away from winter maintenance equipment. The equipment that the Department of Public Works is using is large and hazardous, has many blind spots and most often is operating in slippery conditions. When operations are occurring in your area move away from the area until the operation is complete, this is especially true for children who are often attracted to the equipment.



Avon Grove Charter School Update!



Avon Grove Charter School's new 7th to 12th grade Upper School is nearing completion after many months of steady construction starting in February 2024. Classrooms, offices, and activity spaces are being finalized, allowing students and staff to begin using the new building in the new year. In the weeks leading up to winter break, staff will transition into the space, and classes will begin there on January 5.

The next phase of the project will focus on site work. This includes removing the current 7-12 modular buildings seen from State Road, completing the new turf field and playground, and relocating the micro farm. Looking ahead to 2027, the school will open The Den, a centrally located addition that will include an Upper School cafeteria, an Engineering classroom, and a Family and Consumer Sciences classroom.

Community tours are planned for this winter, so stay tuned for your chance to see the progress up close.





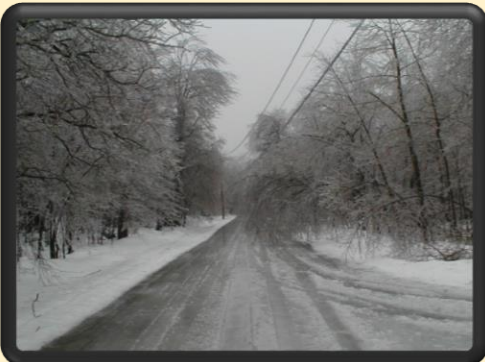
Continued



Structural Property Damage Due to Storms

In London Grove Township we focus on making sure the residential, commercial, educational, and industrial structures are safe for everyone. In order to do this, we need your help. In the event of a catastrophic weather event, such as a tornado, hurricane, flooding, heavy rain, wind storm or even a major snow event or any other form of natural disaster, structural property damage may happen. If you fall victim to structural property damage from one of these events, please contact the Township Fire Marshal to report this and we will be happy to have someone come assess the damage.

When contacting the Township Fire Marshal during or even after one of these events the best and most efficient point of contact would be through email, firemarshal@londongrove.org as the Fire Marshal may be out of the building assessing damage. For immediate response to an emergency please call 911. Thank you for your help in keeping London Grove Township a safe and happy place to live, work and visit!



Winterizing your mailbox

The London Grove Township Department of Public Works and the U.S. Postal service are both expected to deliver during the winter season... come rain, sleet, snow. The location of your mailbox along the roadway can affect the efficiency of both mail service and snow plowing operations.

Where is your mailbox located? Your letter carrier will make every effort to deliver the mail. However, if the mailbox is not accessible to the carrier due to snow buildup, or if it is not properly located along the road, you may have to pick up your mail at the post office.

Normally, if a mailbox is placed as far from the shoulder of the road as the carrier can reach from a vehicle and the mailbox rests on a firm support, the mailbox should be able to withstand the force of snow from a plowing operation. Be sure your mailbox has a strong support. You also may wish to use reflective tape or other material to make the mailbox easier to see during storms or during dark hours.

Plowing operations can push snow against or in front of mailboxes, limiting access and perhaps causing damage to the supports. Check your mailbox and support often, clearing snow from it and depositing the snow properly (never shovel snow onto the road).

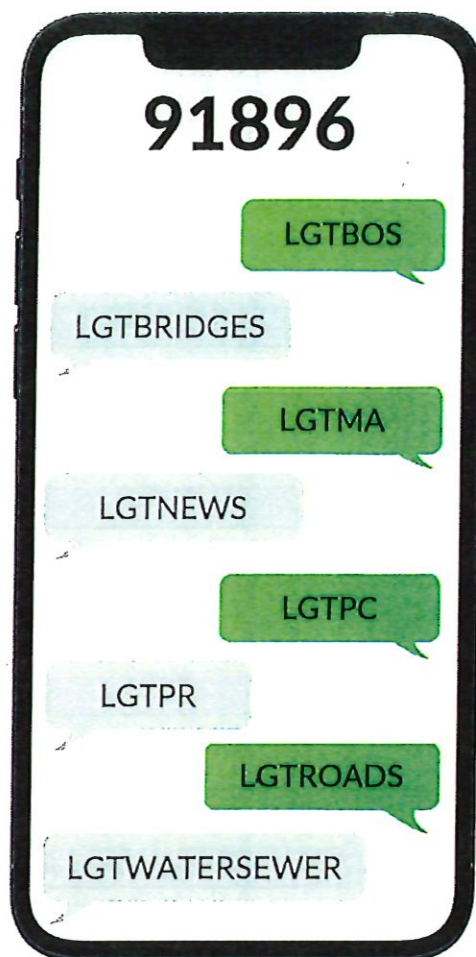
Mailboxes must be installed in accordance with US Postal Service and Federal Highway Administration standards which state;

- Position your mailbox 41" to 45" from the road surface to the bottom of the mailbox or point of mail entry.
- Place your mailbox 6" to 8" back from the curb. If you do not have a raised curb, contact your local postmaster for guidance.
- Put your house or apartment number on the mailbox.
- The mailbox post must be a yielding 4" x 4" wooden support or a 2"-diameter standard steel or aluminum pipe. Unyielding posts are not permitted.



London Grove Township repairs or replaces only mailboxes and/or posts that are actually struck by a winter maintenance vehicle and such repairs are limited to a maximum of \$50.00. Township staff is required to report such damage to the Director of Public Works, or Public Works Superintendent. Additionally, the mailbox must be installed in accordance with standards and a paint mark or tire tracks supply evidence of a mailbox strike. The Township does not repair or replace mailboxes and/or posts that fall from the force of plowed snow. Mailboxes and supporting posts must be installed to withstand the rigors of snow removal, including the force of snow pushed from the street onto the roadside.

! Receive London Grove Alerts



London Grove Township

Sign up to receive notifications via text message.
Opt-in to any of the following programs:

- ✓ Agenda Notices: **LGTBOS**
- ✓ Bridge Updates: **LGTBRIDGES**
- ✓ Municipal Authority: **LGTMA**
- ✓ Newsletters: **LGTNEWS**
- ✓ Planning Commission: **LGTPC**
- ✓ Parks & Rec: **LGTPR**
- ✓ Road Closure Notices: **LGTROADS**
- ✓ Water/Sewer Notifications: **LGTWATERSEWER**

Get Started:

Text in one of the above keywords to: **91896**

What to Expect:

- After the initial keyword is sent, you will receive a confirmation message asking you to reply YES to verify opt-in.
- You may receive up to 4 text messages a month with a notification for each alert category opted-in to.
- Message and data rates may apply. Check with your carrier for more details.

How to Opt-Out:

- Text STOP at any time to remove yourself from the notification list.



OH, THE HOLIDAYS! DECORATE, TASTE – WATCH YOUR WASTE!

By Patti Lynn
Recycling Resources Manager



Quick – what time of year generates the most trash for landfills? That’s right, it’s the holiday season. There’s online shopping and shipping, wrapping paper, more uneaten food, new toys, and electronics. You get the idea. Household waste increases about 25% this time of year!

Can you be more TrashSmart? Try these ideas (or even just one!):

- ❖ Downsize – Smaller gathering, less decorations, careful gifting* so you create less waste
- ❖ Reusable, durable plates and silverware, cups, napkins, tablecloths (ask about renting)
- ❖ Shop (and wrap!) with reusable bags
- ❖ Electronic invitations – Evite®, Greenvelope, Punchbowl®
- ❖ Plan for guests to bring food in their own containers they can take back home, OR
- ❖ Have guests bring reusable containers for leftovers they may take home
- ❖ Cleaning the house – old socks for dusting rags; microfiber fleece cloths are washable
- ❖ Vinegar for glass surfaces
- ❖ [Online resources](#) like this “Guest-imator” can help you plan how much food you need
- ❖ *Gifts for experiences – tickets to an event, museum or zoo membership, cooking class or trip
- ❖ *Gifts of your time – Babysitting, pet sitting, gardening help, lessons for a new hobby, teach someone a new skill
- ❖ *Gift cards for services, not goods – gas stations, car washes, hair/nail salon, massage, lawn service, audio books, pet services
- ❖ Homemade food and gifts show your creativity, time, and effort
- ❖ Wrap gifts in reusable items such as cookies in a flowerpot, or wine bottle in a new dishtowel

RECYCLING BIN: *Non-metallic wrapping paper and greeting cards without batteries*

COMPOST: Evergreens, tea bags, coffee grounds, leaves, twigs, fresh cranberries, produce scraps

GARBAGE CAN: Cellophane, tissue paper, musical greeting cards, plastic ware

BATTERIES are special - [Here’s what to do with them](#)

So, this year...celebrate how mindful you are with sustainable consumption and disposal practices. What GOOD behaviors and habits can YOU start on your way to being TrashSmart? And New Year’s resolutions are just around the corner...

###





Township Departments and Staff

Administration Building:

The administration building is located at 372 Rose Hill Road, West Grove, PA 19390. Hours of Operation are from 8:00 a.m. – 4:30 p.m. Monday – Friday. Our main phone number is 610-345-0100, Fax 610-345-0455.

Public Works Building: The public works building is located at 374 Rose Hill Road, West Grove, PA 19390. Hours of operation are from 6:00 a.m. – 2:00 p.m. Main phone #: 610-345-0100.

Inniscrone Golf Course:

The Inniscrone golf course is located at 15 Athelone Way, Avondale, PA 19311. Hours of operation are from 7:00 a.m. – 7:00 p.m., 7 days a week. Main phone #: 484-720-8442.

Administration Department:

Township Manager/ Zoning Officer: Ken Battin
Assistant Township Manager: Dawn Maciejczyk
Township Secretary: Rain Catoia
Director of Open Space & Parks: Victoria Lichman

Public Works Building:

Public Works Director: Shane Kinsey
Public Works Superintendent: Nate Hughes
Public Works Foreman: Ryan Yerkes
Water / Sewer Operator: John Bright

Codes Department:

Director of Codes and Life Safety: Brian Elwood
Fire Marshal: Tim Shannon

Laborers:

Shaun Dickenson
Brenden McNair
Jack Jacobson
Devlin Schekner
Arthur Chester
Keith Pyle Jr.

Finance Department:

Treasurer: Tracy Kellett
Utility Billing/Codes Assistant: Jordon Hoopes

Inniscrone Golf Club:

Golf Course Director:
Chris Ward

Greens Manager:
Chris Newdeck

Greens Assistant:
Kyle Basehore

Pro Shop Manager:
Jesse Connors

2025/2026 Public Meeting Schedule

Municipal Authority Board Meetings: 1st Monday of every odd month & December at 6:00 p.m.

Board of Supervisors Meetings: 2nd Wednesday of every month at 7:00 p.m. (Exceptions: Jan. & Nov.)

Historical Commission Meetings: Last Wednesday of every month at 5:30 p.m. (Exceptions: Nov. & Dec.)

Open Space Committee Meetings: 2nd Tuesday of the month at 6:30 p.m.

Parks and Recreation Meetings: 2nd Tuesday of each month at 6:00 p.m.

Planning Commission Meetings: Last Wednesday of the month at 7:00 p.m. (Except November & December, these are the 3rd Wednesday of the month)

Zoning Hearing Board Meetings: As Necessary.

All meetings will happen on the day above as listed unless it is a holiday or other announcements have been made. All meetings are listed on the Township Website Calendar